

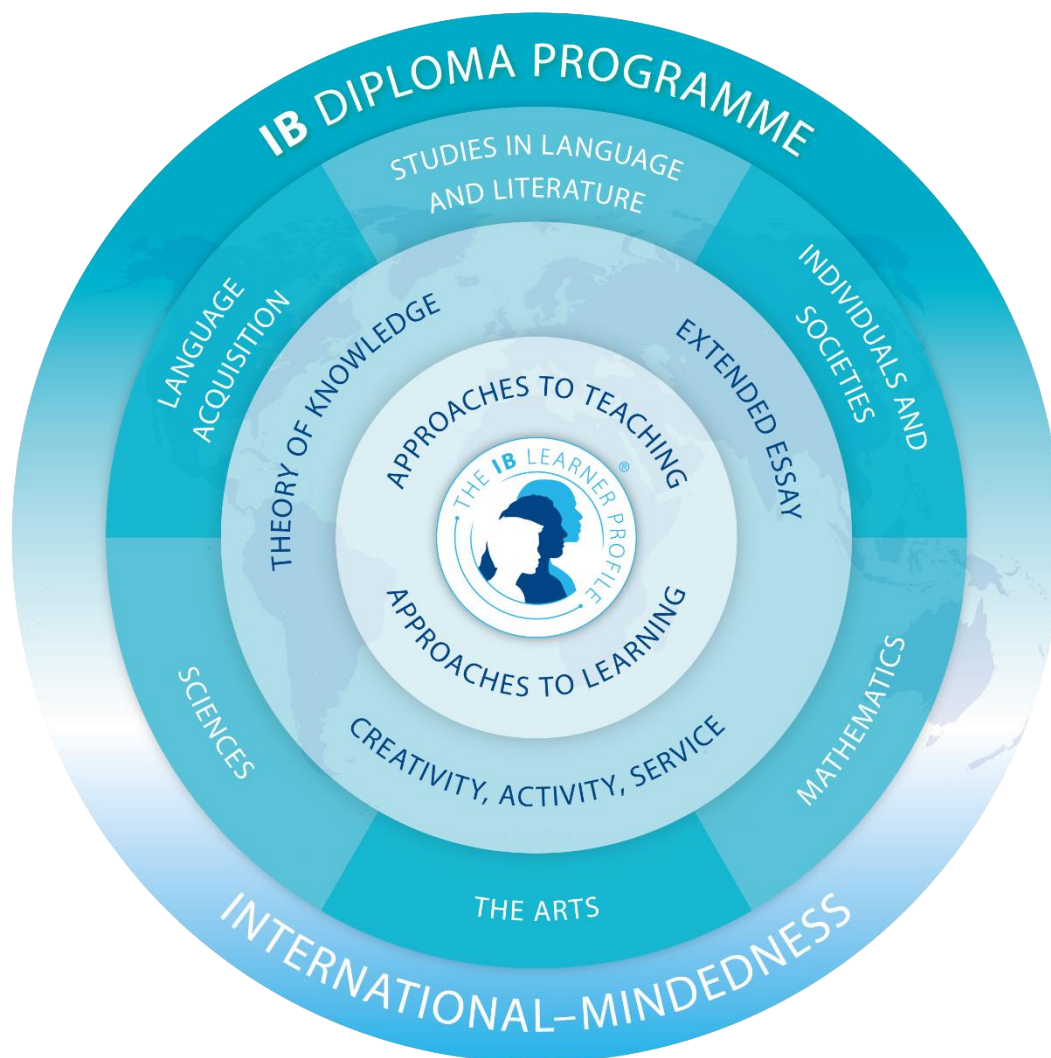


ADMISSIONS POLICY

Björknäsgymnasiet

Mission Statement from the IB

The International Baccalaureate aims to develop inquiring, knowledgeable and caring young people who help to create a better and more peaceful world through intercultural understanding and respect. To this end the organization works with schools, governments and international organizations to develop challenging programmes of international education and rigorous assessment. These programmes encourage students across the world to become active, compassionate and lifelong learners who understand that other people, with their differences, can also be right.



The School's Mission Statement

Our mission is to provide a dynamic diverse learning environment where we celebrate multiculturalism and promote sustainability and peace to produce positive global citizens.

We aim to inspire our learners to become courageous and competent through our inquiry based and holistic education, where they will achieve both personal and academic success.

Björknäsgymnasiet is a positive and inspirational environment where staff and students grow as individuals and humans.

Background

Björknäsgymnasiet is a state-funded school that is open to everyone in the age 16-18. The main student body is from the Boden municipality but we also welcome students from the surrounding area. We welcome students from anywhere in Sweden, the Nordic countries and the world. Students from other countries that do not already live in Boden will be taken into consideration once they have a student visa. The final decision for all admissions to our school is made by our Head of School. The school has no fees, and all students get the course books as well as a personal laptop (see *Inclusion policy*).

We expect most of our students to come from the Swedish compulsory school which is nine years only and therefore we have a preparatory year before the DP. Students coming from MYP5 or equivalents from other systems may start the DP directly.

Criteria for admission to preparatory year

- Diploma from Swedish secondary school with a grade E or higher in twelve subjects of which the following are required: English, Mathematics, Social studies, Geography, Religion, History.
- Secondary school diploma from another country.
- MYP4-students from International School of Boden are guaranteed enrollment at the preparatory year and thereafter the Diploma Programme.
- Entrance tests are available for students lacking documentation from their former school, e.g. refugees (see Inclusion Policy).

Criteria for admission to DP

- Students from the International School of Boden MYP 5 will automatically be enrolled in DP1 and DP2.
- Students from the preparatory year with passing grades will automatically be enrolled in DP1 and DP2. If not all grades are passed, faculty members will decide if the student is considered prepared for the DP, and if it is beneficial for the student to enroll at the Diploma Programme. If not, the student, parents/guardians and mentor will be invited to a meeting with the career guidance counsellor to discuss alternative pathways to academic studies.
- Students from other IB schools can contact our Programme Coordinator for information regarding enrollment. Students already enrolled at the DP at a different school, may be enrolled during the school year. The entire second year of the DP needs to be completed at our school.

- Students in DP1 are automatically re-enrolled in DP2 at the beginning of the next academic year.

Language policy

Our language of instruction is English and the local language is Swedish. We offer study guidance in many languages and we also have teachers and librarians that are proficient in English, French, German and Spanish. We encourage the diversity of languages in our classrooms and social areas, and with students from many countries there will be an exciting cultural mix (see language policy).

How to apply

Applicants attending 9th grade in Swedish secondary schools in the Norrbotten region apply at <https://gymnasieantagningnord.se/>. The career guidance counsellors at their respective secondary school will provide information on how to apply.

Applicants from other regions in Sweden are encouraged to contact their respective career guidance counsellors to get assistance to apply to the Pre-DP at Björknäs gymnasiet.

Applicants from other countries are asked to contact the Diploma Programme Coordinator for information on how to apply to the Pre-DP.

We use the same application period as the Swedish upper secondary schools in our area. There is one period for preliminary admissions in January/February, and then another in April/May for students who want to change their application to a different programme. The final letter of acceptance is delivered in early July. All enrolled students study for the full diploma.

Steps to take

1. Contact our programme coordinator for information about the programme and our admission routines, see contact information below.
2. Applicants from the Swedish secondary school apply according to the information given by their respective schools. Students from other countries, contact the Diploma Programme coordinator for information on how to apply.
3. The application is processed by the school. Applicants with the necessary academic merits will proceed to the next step. Applicants lacking documentation will be invited to an entrance test (see Inclusion Policy).
4. All applicants are invited to interviews as part of the admissions process. This provides an opportunity for the applicant to learn more about the IB Diploma Programme and the expectations and demands from the school as well as the school's mission and values. The interview is also an opportunity for the IBDP staff to learn more about the student, his/her expectations and future goals and how the IBDP can be beneficial for the applicant's academic ambitions.

Starting in the middle of the academic year

Applicants applying from countries that start their academic year in the spring, will have to start the same grade again in August to be in line with their peers. We plan for exams in May only.

Entrance tests

If applicants lack documentation proving graduation from compulsory school, they can do entrance tests in mathematics, English language and essay writing. The tests are constructed to sort out if the applicants have the necessary knowledge to be enrolled into the preparatory year and is followed by a personal interview. The standardised tests used are according to Swedish national curricula for compulsory school year 9. All students must do the preparatory year unless they have finished MYP5 or an equivalent from a foreign school system.

Organization

We plan for a group of 24 students although our flexible organization allows for up to 32 students if the application pressure is high. If the programme is more popular than expected, we will overlook the organization and aim to start two groups.

Inclusion

Students with special needs apply like everyone else. They are also invited to a meeting with our special education teacher prior to school start, so that the necessary adjustments are in place. There will also be an individual follow-up by the special education teacher and the student's mentor during the period of studies at our school. Our school prides itself on a professional team of special education teachers that work closely with the school leadership and the SWT-team (see inclusion policy).

Policy Review

The admissions policy will be reviewed annually in November by the Programme Coordinator, the Guidance Counsellor and the Deputy Head of School.

Revised April 2024.

Contact Information

Programme Coordinator and Guidance Counsellor

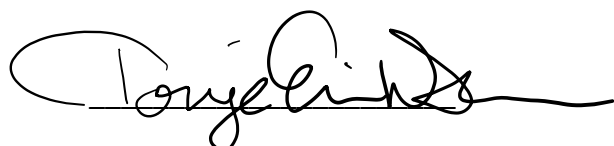
Nina Berggren nina-charlotte.berggren@boden.se

Phone +46 704 03 88 38

Website

<https://www.boden.se/utbildning/international-school/international-programme-upper-secondary.62d60acc>

Boden 16 October 2023



Tonje Eriksen

Deputy Head of School